



SWAY
Site-Specific Installation

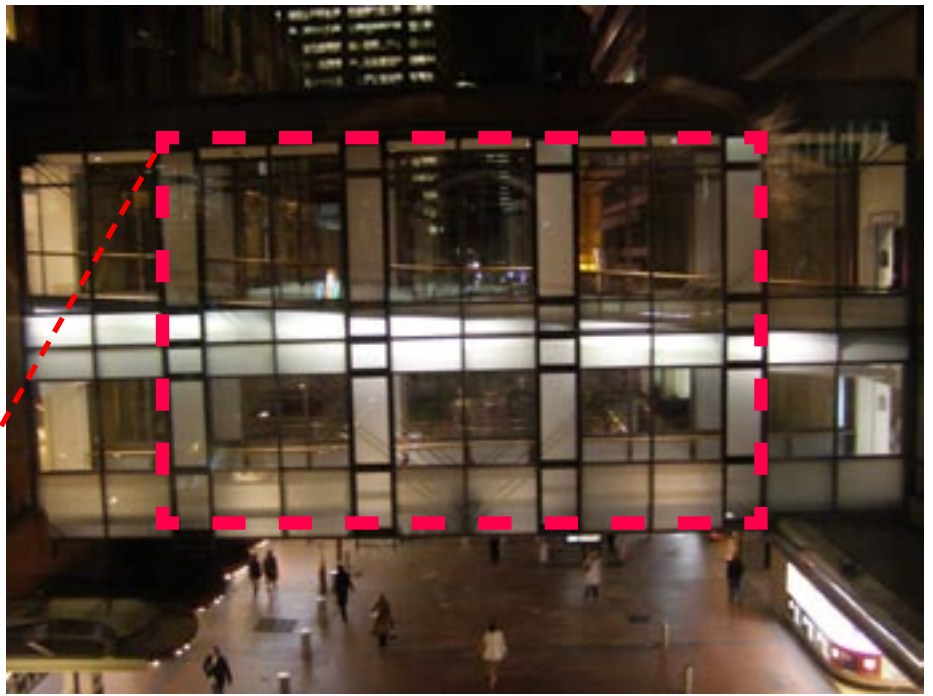
Synopsis
*

Terminus

by Melissa Ramos

The movement;
within the spaces in-between
the buildings are detected
by live video cameras, which
manifests the volume and
currents of the oceanic
atmosphere.

Location: Pitt Street, Sydney
Dates: April - May 2007
Time: Evenings

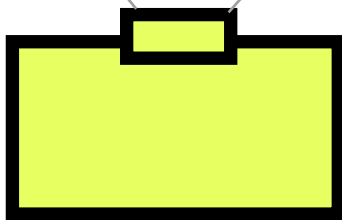


Projection Location : 2nd Bridge

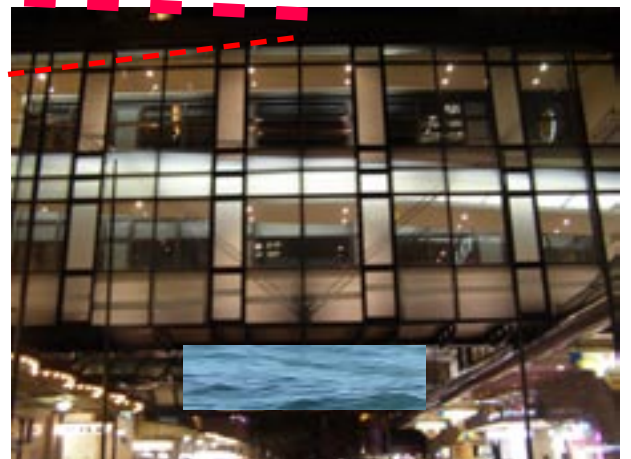
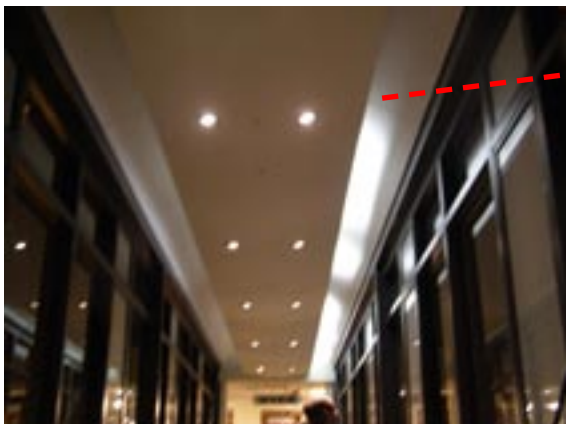


Dimensions of projected space:

H: 8 m
W: 10 m



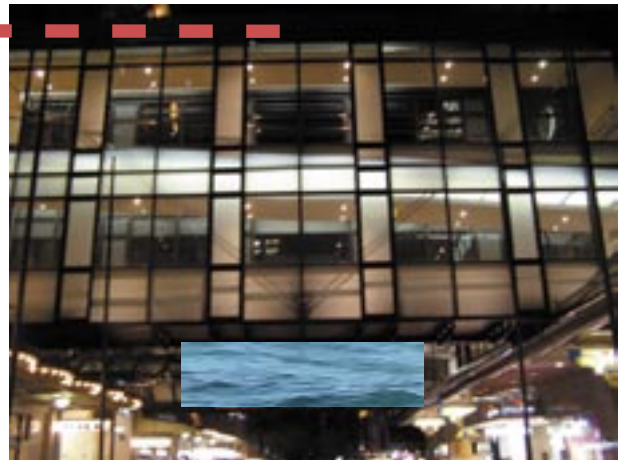
DATA PROJECTOR Location: Data Projector
1st Bridge



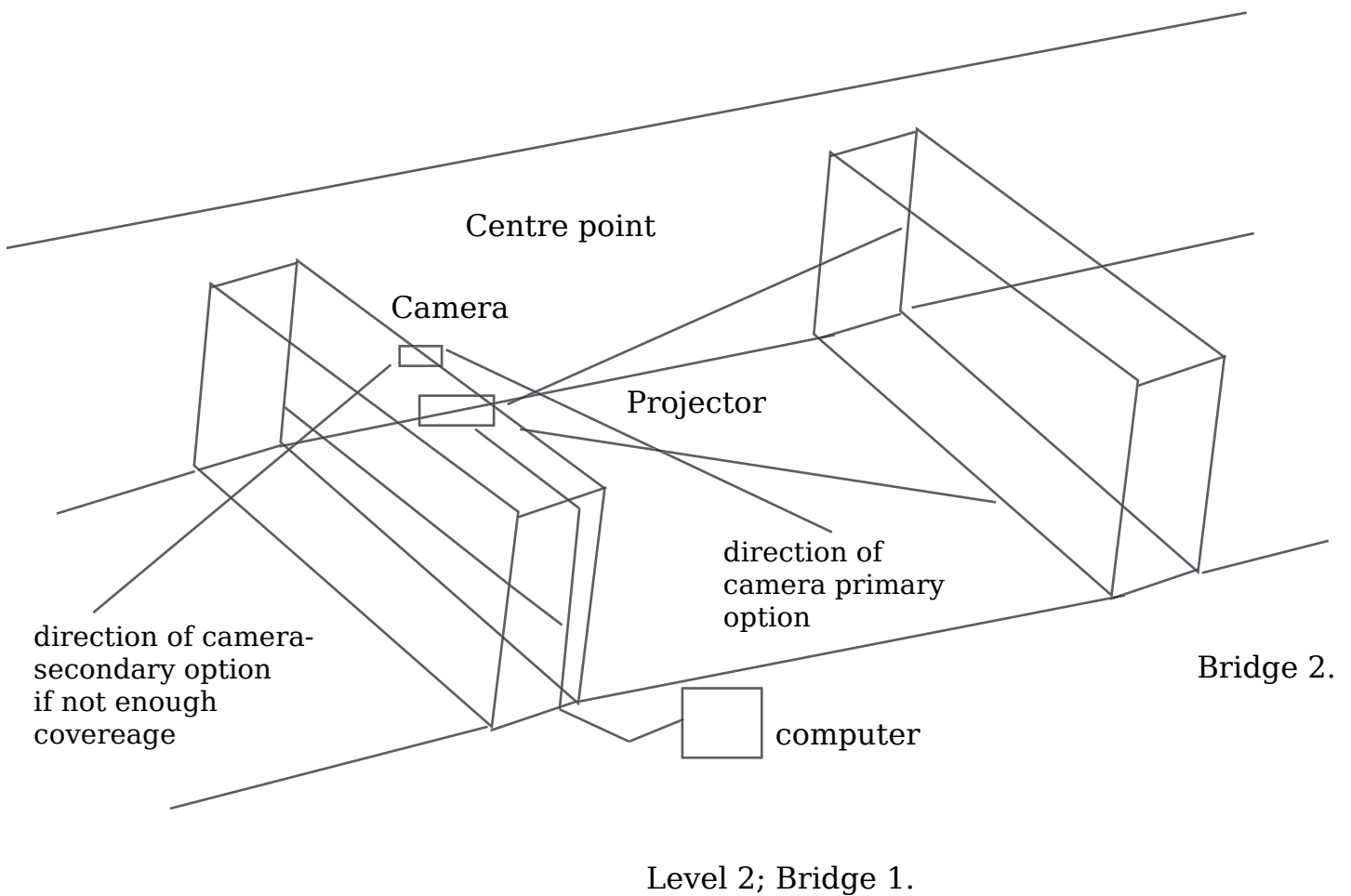
1 x Surveillance Camera



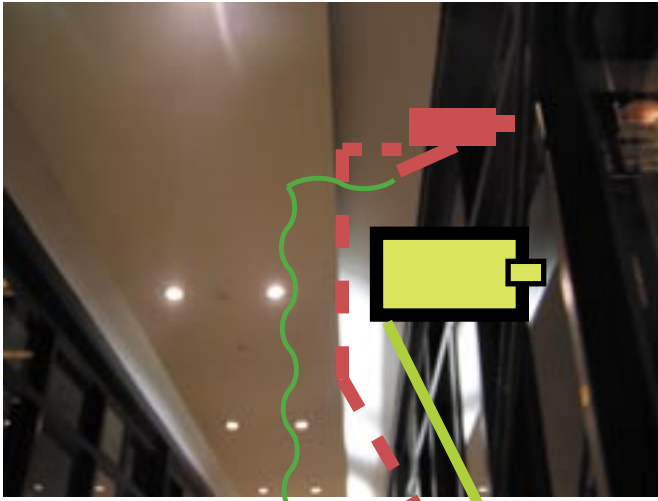
Location for Camera



70 metres range



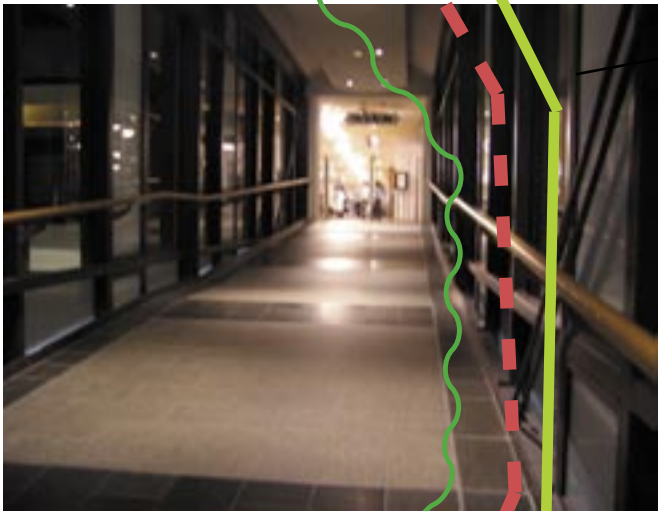
Bridge 2.



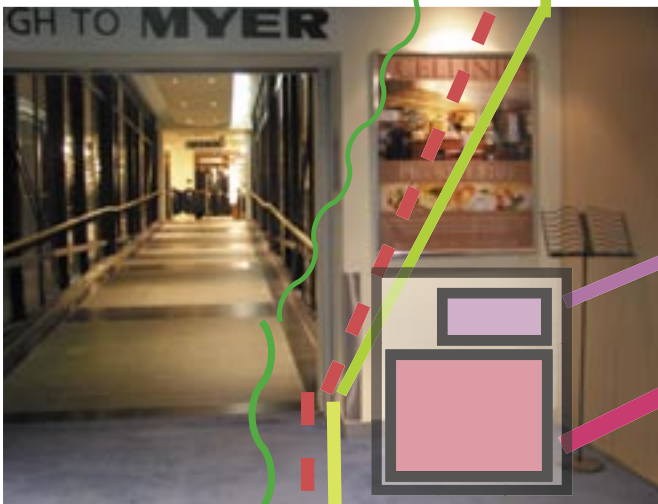
Mount Camera

Mount Projector

Mounted Data Projector:
(weight 1.8 kg)



VGA Cable - 50 metres
(Data Video DVI)



Metal box Encasing for security

USB to Analog USB CONVERTER

**G 5 Macintosh 2.5 Gh - 250Gig
With MONITOR**

Power Board



Power points

2 x computer
1 x Data projector
1 x camera

Cables / extension leads
1 x 80 m camera lead
1 x 70 m VGA Cable
from projector to computer.

1 x Extension lead to connect to
power boards

Bridge 1. (furtherst)



Temporary Outdoor Matt Paint or Material

Dimensions:

H: 8 m

W: 10 m
